



Ernest Bevin Academy

The best in everyone™

Part of United Learning

Parent Information Booklet 2024-2025

Fostering Excellence in Young Men




Ofsted
Good
Provider

Contents

Welcome from the Principal	3
Key Academy Staff	4
The School Day	5
Being EBA Ready	6
<i>Uniform</i>	6
<i>Sports Kit</i>	7
<i>Equipment List</i>	7
<i>Lost Property</i>	8
Extra-curricular Clubs	9
Refreshments and Meals	10
<i>Cashless School</i>	10
<i>Breakfast Club</i>	10
<i>Free School Meals</i>	10
Attendance and Punctuality	11
<i>Illness</i>	11
<i>Latecomers</i>	11
<i>Term Time Absence</i>	11
Keeping in Contact	12
<i>How to contact us</i>	12
Rewards, Behaviour and Wellbeing	13
<i>Rewards</i>	13
<i>Behaviour</i>	13
<i>Wellbeing</i>	14
<i>Medical Needs</i>	14
Homework and Microsoft	15
<i>Homework</i>	15
<i>Microsoft Teams</i>	15
<i>New Group Reading Test</i>	15
Assessment	16
<i>Reporting</i>	16
<i>Parents' Evening</i>	16
<i>Assessment</i>	16
Travel to School	17
Key Dates	18
Map	19

Welcome from the Principal

Fostering Excellence in Young Men

Dear Parents and Carers

Welcome to Ernest Bevin Academy, a place with a tremendous amount to offer. Your son will have rich experiences inside and out of the classroom and can achieve and flourish.

We offer a broad and challenging curriculum that will ensure your son can find his passion and energy to achieve to his highest potential.

Our boys achieve progress scores above the national average for boys. We are proud of their success and we expect every boy to take pride in their work and be the very best that they can be. We have high expectations in both our academic and pastoral responsibilities to our students. We are fully committed to ensuring that the students get the best experience from what EBA can offer. This starts first and foremost in the classroom where we strive for excellence in our day-to-day teaching and learning. As a result, we share our students' pride in their examination success and the opportunities they are given through strong qualifications. Furthermore, each member of staff has a responsibility for the well-being and safeguarding of all our students; we will continue to support young people to uphold our values.

We deliver an ambitious and creative curriculum designed to develop a love of learning and an intellectual curiosity amongst our students. In addition to the formal curriculum, we offer a wealth of enrichment opportunities designed to enhance our students' educational experience and develop their cultural awareness and appreciation. We aim to ensure that our students graduate from Ernest Bevin Academy with excellent qualifications, life skills and wealth of experience to ensure their success in further education, training or a career path of their choosing.

Your son is truly special to us and we will take good care of him on the next stage of his learning.

Tracy Dohel, Principal



Key Academy Staff

Ms Dohel	Principal
Mr Blakemore	Deputy Principal
Mrs Dorcely	Director of Learning, Main School
Ms Brown	Head of Year 7, 8 and 9
Mr Walker	Year 7 Transition Lead
Miss Lamptey	Pastoral Support Manager, Years 7, 8 and 9
Miss Williams	SENCo
Mr Kay	Safeguarding and Wellbeing Lead
Miss Sweeney	Attendance and Welfare Officer
Miss Ngombo	Healthcare Coordinator
Ms Cochrane	Admissions Officer



The School Day

Times of the school day

Students must be in school by 8.35 in full uniform

Registration and Assembly	08.40	-	09.10
Lesson 1	09.10	-	10.10
Lesson 2	10.10	-	11.10
Break	11.10	-	11.30
Lesson 3	11.30	-	12.30
Lesson 4	12.30	-	13.30
Lunch	13.30	-	14.10
Lesson 5	14.10		15.10
Extra Curricular	15.10	-	16.00 (approx)

Parent Tip:

- Please familiarise yourself with your son's timetable
- Ask him how well specific lessons have gone each day
- Check that he has done the homework and has everything he needs for the next day



Being EBA Ready

Uniform

Every student is expected to wear school uniform throughout the day and to and from school

- Black blazer with EBA Phoenix logo pre-embroidered on pocket
- Tie in year colour
- Black tailored trousers
- White shirt with collar
- Black leather shoes (See below)
- Black V-neck jumper (optional)



Pre loved Uniform online shop

We are keen to help families and the environment by finding homes for outgrown uniform.

Our new online shop can now be accessed through Arbor. To see all the items available to purchase please go to the Arbor app.





School Uniform Direct is the supplier of Ernest Bevin Academy approved uniform and sportswear.

You can purchase uniform online at:

School Uniform Direct

or by visiting their store at Unit 5, Mitcham Industrial Estate, Streatham Road, Mitcham, CR4 2AP.

- The EBA rules in the electronic devices policy state that mobile telephones are not brought to school.
- The school does NOT accept liability for any damage and/or loss of such articles.
- The acceptable shoes to be worn at EBA are ticked below.

Examples of types of footwear <u>not</u> allowed within uniform policy  Please note - outlets such as Clarks and Sports Direct will often try to market footwear such as the examples below as 'School Shoes'	Examples of types of footwear allowed within uniform policy 
	

Being EBA Ready

Sports Kit

Sports kit must be brought in to school in an appropriate bag on the days it is needed.

- Black shorts or EBA PE trousers (no branding)
- EBA sports top
- Football socks
- Trainers/football boots depending on activity
- Swimming trunks, towel & goggles when swimming is timetabled



Equipment List

All students should have the following equipment with them each day:

- Black pens, green pen and pencil
- Basic scientific calculator
- Geometrical instrument set
- Eraser (note Tipex or its equivalent is not permitted)
- Reading book (to be carried at all times)

Parent Tip:

- Please check your son is wearing the correct uniform each morning before leaving for school
- Encourage your son to pack his school bag the night before
- Please write your son's name on clothes, his school bag and PE kit
- Please check school requirements before buying new school shoes
- Encourage your son to bring in a reusable water bottle each day



Being EBA Ready

Lost Property

Please name all items of school uniform and equipment to ensure they can be returned to your son if they are found. Any unnamed items will be kept in the school office and parents are encouraged to enquire after any items that have gone missing. PE kit will be kept in the PE office and boys who have forgotten their kit may be able to borrow items if available. At the end of each term, any remaining unclaimed items of clothing that cannot be returned to their owners will be donated to a local charity shop.

Parent Tip:

- Label everything!
- If your son loses an item of clothing, telephone or drop in to the school office



Extra-curricular Activities



There is a wide range of extra-curricular clubs and activities taking place at Ernest Bevin Academy. Extra curricular activities range from homework clubs to clubs based on school subjects and a wide selection of sports.

At EBA we offer Combined Cadet Force (CCF), this offers life changing experiences that no other extra-curricular activity can match. It is open to students in Years 9-13. Students in Years 8 and 9 can apply to join in the summer term each year.

Attending extracurricular clubs helps to develop emotional, social and interpersonal skills and improves resilience and confidence. They are also a great way to make friends and have fun. We strongly encourage students to try as many activities on offer as possible and expect Year 7 to attend something every day.



Parent Tip:

- Talk to your son about the clubs and what he is interested in
- We expect every Year 7 to take part in Extra-curricular Activities



Refreshments and Meals

School meals are provided by Harrisons caterers. The on-site catering team prepare fresh food on site that fulfils all current government requirements for healthy living.

A choice of hot meals, including a vegetarian option, is served daily as well as a more deli style section serving baguettes, pasta, soup and baked potatoes. Healthy eating is important for the students so that they can have a nutritious tasty meal. All meat is Halal and we promote Meat-Free Mondays.

There is also a food service at morning break time where students can buy healthy snacks and drinks.

We operate a cashless biometric system to pay for meals to make the dinner service as speedy as possible.

Students are welcome to bring a packed lunch; this should be eaten in the lunch hall. Jugs of water are available free of charge in the lunch hall. We encourage families to provide healthy packed lunches. Students must not bring in sweets, chewing gum, fizzy drinks or energy drinks.



Cashless School

At EBA we use Arbor to enable parents to pay for food, trips and other items using the website or the mobile phone app.

Parents will be given information about how to set up a personal account when their son joins the school.

Breakfast Club

EBA offers a free Breakfast Club for **all** students from 8.15-8.30am by the student entrance. Research has shown eating a healthy breakfast improves student concentration in morning

Free School Meals

Free school meals are available to eligible students.

If you think your child may be eligible please ask the school office for an application form or visit the local authority (where you are resident) website and complete the application.

Please note, free school meals entitlement does not roll over automatically from primary school, you will need to reapply.

Parent Tips:



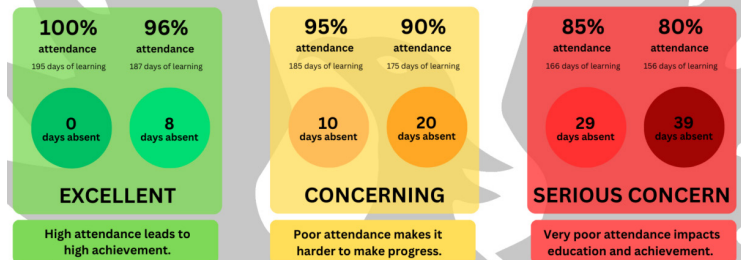
- Please talk to your son and encourage him to eat healthily
- Please do not let him bring in foods high in sugar or caffeine
- Please ensure there is enough money on his Arbor account to pay for lunch
- Please apply for free school meal entitlement as it enables the school to claim for additional resources and helps to support your son to attend trips etc

Attendance and Punctuality

The school has very high rates of attendance and punctuality; these contribute to our academic success. Regular attendance and punctuality is crucial to learning.

The school has an electronic system to register both daily school and individual lesson attendance. Parents are alerted to non-attendance by an Arbor message in the morning after the registers have closed.

What is Good Attendance?



Illness

Should a student be unwell, parents should telephone the school on **0208 672 8582** and **press 1 for the absence hotline**.

You can send a message via the **Arbor app**. This message should include your son's name, tutor group and reason for absence. You can also email **absence@ernestbevinacademy.org.uk**

Latecomers

Latecomers should sign in at the student entrance or reception. An appointment card must be shown if lateness is due to an appointment. An hour detention will be set for the same day if there is no acceptable reason for lateness or proof of appointment.

Term Time Absence

Holidays should not be taken in term time and if this does occur it will initially result in a meeting with the Principal.

Parent Tips:

- Please ensure your son has excellent attendance – aim for 100%
- Please help your son to arrive on time for school each day. We recommend all students are on site by 8.35am but the school is open to students from 8:15am for breakfast club. Students must be in their tutor room by 8.40am
- If you have to report an absence please telephone the school or report it using the Arbor app
- Please do not book holidays during the school term
- Please try and book medical and dental appointments outside of school hours and non-emergency appointments during the school holidays

Keeping in Contact

At EBA we recognise the importance of working in partnership with parents. In Year 7 we would recommend you contact your son's tutor in the first instance.

EBA uses the Arbor app to keep in contact with parents and families. This enables you to feel as much a part of your son's education as possible by providing daily updates on achievement and behaviour. Arbor is a free parent app that you should download to your smartphone as soon as your son starts at the school to enable us to send messages straight to your phone. The app will automatically sync with your son's records by using your phone number so please ensure you keep the school up to date with any changes.

We will send messages directly to the app telling you important information about your son's education and to remind you about events such as parents' evening.

How to contact us

By Arbor app:

The Arbor app can be downloaded free of charge on to your smartphone via Google Play or Apple store. Once you have installed the app search for Ernest Bevin Academy and follow the instructions. It will take 24-48 hours for the system to synchronise with your son's records at school.



By Phone

Contact the school office directly on 020 8672 8582 and ask to be put through to the relevant member of staff. If they are unavailable please leave a message and it will be passed on to the member of staff. The majority of our staff are with students during the school day so they may need to call back at the end of teaching time.

By email

Contact mail@ernestbevinacademy.org.uk Emails will be forwarded to the relevant member of staff.

Via the Student planner

Parents should sign the planner every week to indicate they have checked homework has been completed. You can also write messages to the tutor or subject teacher in the planner.

In person:

If you would prefer to speak to a member of staff please make contact in advance and arrange for a convenient time. It is unlikely that you will be able to meet with a member of staff if you come in to school without a pre-arranged meeting booked and we would strongly discourage parents from doing so except in an emergency.

Rewards, Behaviour and Wellbeing

Ernest Bevin Academy takes behaviour seriously: good behaviour helps all students to be successful.

The school has a clear code of conduct and discipline procedure which is explained to students and their families before joining the school. We ask everyone to sign an agreement and agree to abide by its terms so that everyone can benefit from a calm environment.

Rewards

There is a huge focus on making sure students are acknowledged, praised and commended for doing the right thing at EBA.

There are many ways that we reward good behaviour at our school, one of which is the use of positive points. When a teacher awards positive points to a student, parents are notified via Arbor. Additionally, we host formal awards evenings where students are recognized for their achievements and presented with certificates and prizes.

Behaviour

Students who fail to meet the expectations of the code of conduct (the EBA way) can expect to have sanctions applied. The school runs sanctions with staff, departments and year teams. Sanctions includes community service and detentions. A student may be removed from a classroom and be placed in the reflection room, out of general circulation for a period of time.

School staff use restorative justice techniques to resolve issues and to improve behaviour; this is a successful technique for resolving arguments and encouraging students to take responsibility for their actions.



Parent Tips:

- Please support the school's behaviour policy and encourage your son to comply with the EBA way



Wellbeing

At Ernest Bevin Academy we strive to improve the mental health and wellbeing of the whole school community.

We have achieved the Wellbeing award for schools two consecutive times. We do not rest on our laurels and are continuing to expand our knowledge in these areas and improve our service.

To access any of the support on offer please speak to your son's tutor for an informal chat and they can signpost you to the specialised pastoral and mental health members of staff if necessary.

Each key stage has a pastoral support manager dedicated to offering support and guidance to students.

Should students need more emotional and

mental health support there is a qualified counsellor, who offers weekly one to one counselling sessions on referral.

We will be training a team of year 10 students as 'Wellbeing Ambassadors' who are easily recognisable by the wellbeing ambassador badges they proudly wear. The Wellbeing Ambassadors run a lunch time club for year 7 and 8 students where they offer a space for peer support, mentoring, wellbeing advice, colouring and board games. This programme has run very successfully in the past.

We are also able to signpost or refer students to services such as Kooth, Catch 22 and CAMHs where necessary.

Medical Needs

Students with medical needs may keep prescription medications (asthma inhalers, epipens etc) in the medical room. Complex medical needs will require a meeting and a plan. Please fill in a medical form with as much detail as possible and if you have any concerns talk to your son's tutor.



Parent Tips:

- Please seek help if you have concerns about your son's wellbeing
- Please keep the school informed about any medical conditions



Homework and Teams

Homework

Homework is an important part of secondary school education and students at Ernest Bevin Academy are encouraged to get into good habits early in Year 7. Homework can help to extend learning, consolidate what they have learnt in class and encourage independent study.

Homework is set according to a timetable and is closely monitored by tutors and teachers. If students are having trouble completing homework, they should talk to the teacher who has set it ahead of the deadline. Computers are available in the library at lunch time and after school for students to do their homework. Incomplete or missing homework will be completed during a detention at lunchtime or after school.

Microsoft Teams

At Ernest Bevin Academy, teachers use an online platform called Microsoft Teams to set the majority of homework. Students are given a login with their usernames and passwords for Microsoft Teams. Students are asked to make a brief note in their planner reminding them of the homework set in each lesson and parents are asked to check the planner and remind students to do their homework on time.

New Group Reading Test (NGRT)

We conduct a NGRT reading test at the start of year 7 & 8. Students who have a reading age below their actual age will get specific literacy intervention. Intervention is either phonics or reciprocal reading, with specialist trained staff. We test students mid-year and adjust support as required. The library is open at lunch times, and it is recommended that students take out books weekly. Tutor groups read books together, on average it is 4 books a year.



Parent Tips:

- Help your child to develop a good homework routine
- Switch off or remove phones and other distractions whilst they are working
- Check your son's planner to make sure homework is completed
- Encourage your son to check his homework for silly mistakes before submitting it
- Keep a note of your son's logins for Microsoft Teams, Sparx Maths, Kerboodle etc
- Contact your son's tutor or subject teacher if you have any concerns or your son is struggling with their homework
- Check your son is reading for at least 20 minutes every day



Assessment

Reporting

Parents receive student information three times a year:

Autumn Term - Attitude to learning

Spring Term - Mid-Term assessment

Summer Term- End of Year assessments and tutor comments

Parents Evening

There is a formal Parents' Evening where you have the opportunity to discuss your son's progress with subject teachers. We encourage all parents to attend Parents' Evenings and to attend other information events that will take place during the year. For example, the Year 7 Learning Showcase in the autumn term offers parents the chance to come in to school and see work that students have completed in their first few weeks. It also gives parents the opportunity to meet with members of staff informally.

Assessment

The school normally holds a baseline test at the start of the year, mid-year assessments in January, and an assessment week in June for all year groups to assess the progress and learning that has taken place during the academic year. In Year 7 assessments normally take place in the classroom, during lesson time, but as students get older more formal examination-style assessments take place to familiarise the student with public exam conditions.



Parent Tip:



- Please ensure you are receiving regular communications from school via Arbor and look out for your son's report
- Attend Parents' Evenings and other events
- Help your son to prepare for assessments and examinations by encouraging him to review or revise the work he has done
- Look out for revision tips that the school will send home and help your son to get into good habits early on

Travel to School

We encourage students to travel to school either by foot, by bike or by public transport in order to minimise congestion and the impact on the local community.



EBA is located in Wandsworth, South London within easy walking distance of Tooting Bec underground station on the Northern Line and close to several bus routes.

By Tube:

We are a short walk from Tooting Bec tube station.

By Bus:

Routes 155, 219, 249, 319, 355, 690 all pass by close to the school.

By Bike students should:

- Use the bike shed by the student entrance to lock their bikes
- Always wear a helmet and be vigilant when cycling on local roads
- Wear high-visibility clothing and have lights if cycling in the dark
- Use a good quality D bike lock to secure their bike in the designated areas
- Students should not share a lock with friends

For more information click on the link to the TFL website
(and enter EBA's postcode SW17 7DF)

[Transport for London](https://tfl.gov.uk/)

Parent Tip:

- Please practice routes with your son to ensure he knows his way to school and home again
- Encourage your son to travel to school with a friend or someone who lives nearby
- Please ensure your son leaves in good time so that he is not running late
- Encourage your son to cross the road at pedestrian and zebra crossings particularly at busy junctions such as at Tooting Bec



Key Dates

Autumn Term 2024	
First day	Wednesday 4th September 2024
Half term	Monday 28th to Friday 1st November 2024
End of term	Thursday 20th December 2024

Spring Term 2025	
First day	Monday 6th January 2025
Half term	Monday 17th to Friday 21st February 2025
End of term	Friday 4th April 2025

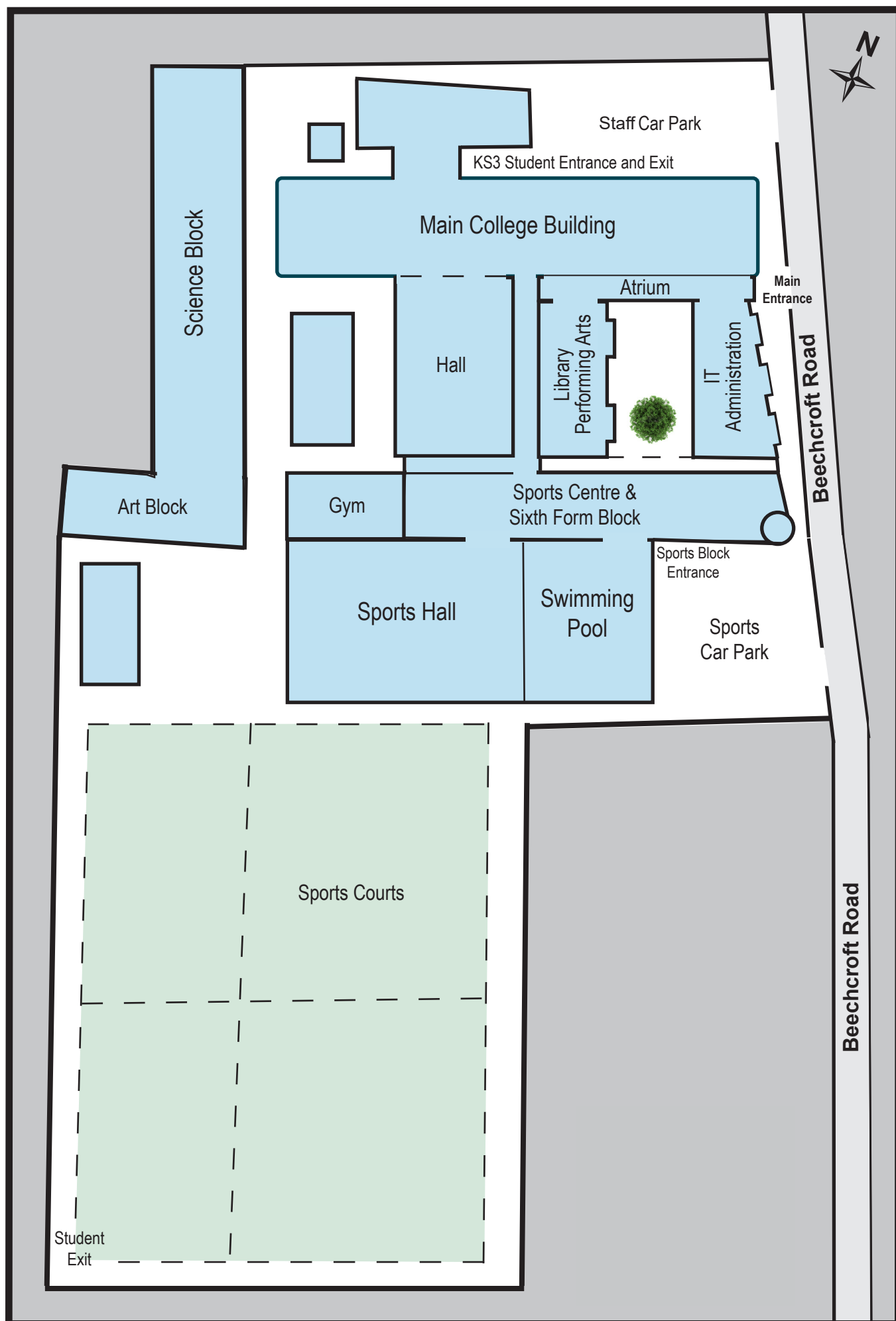
Summer Term 2025	
First day	Tuesday 22nd April 2025
Half term	Monday 26th May to Friday 30th May 2025
End of term	Friday 18th July 2025

Inset Days (staff training) - School closed to students

Monday 2 September 2024
Tuesday 3 September 2024
Wednesday 2nd October 2024
Friday 29th November 2024
Monday 6th January 2025
Monday 3rd February 2025
Tuesday 22nd April 2025
Friday 27th June 2025



Ernest Bevin Academy - Ariel view of site



Ernest Bevin Academy



The best in everyone™

Ernest Bevin Academy

Beechcroft Road

Tooting, London

SW17 7DF

T: 020 8672 8582

W: ernestbevinacademy.org.uk